

# —Standard Valves—

4043-C Valve  
-D Valve

## 4043-C AND 4043-D VALVES

TRIODES.

Similar to 4043-A and -B, but have grid designed to reduce grid emission. It is thus possible to drive the grid further positive and to obtain greater undistorted output than for 4043-A and -B Valves.

### SPECIFICATION.

#### Cathode.

Oxide coated filament.  
Constant voltage type.

#### Base.

4043-C American medium 4-pin.  
4043-D standard British 4-pin.

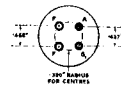
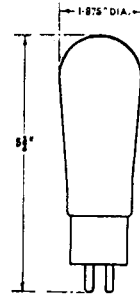
#### Dimensions.

Overall length	5½" (14.6 cms.)
Maximum diameter	1⅞" (4.8 cms.)
Net weight	0.2 lbs. (90 gms.)

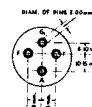
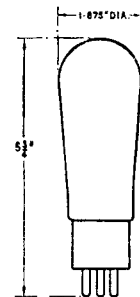
#### Constants.

Filament voltage	7.5 volts
Nominal filament current	1.2 amps.
*Impedance	3,500 ohms
*Amplification factor	8
Grid-anode capacity	13.3 μμF.
Anode-filament capacity	4.8 μμF.
Grid-filament capacity	7.0 μμF.

\* at anode current of 0.050 amps.



4043-C



4043-D

### LIMITING CONDITIONS FOR SAFE OPERATION.

Maximum direct anode voltage	600 volts
Maximum direct anode current	0.110 amps.
Maximum anode dissipation	35 watts
Maximum direct grid current	0.030 amps.
Maximum frequency for above ratings	2 Mc.
Maximum anode voltage for frequency of 10 Mc.	500 volts

V.4043-CD.1  
Nov. 1937

# —Standard Valves—

## TYPICAL OPERATING CONDITIONS.

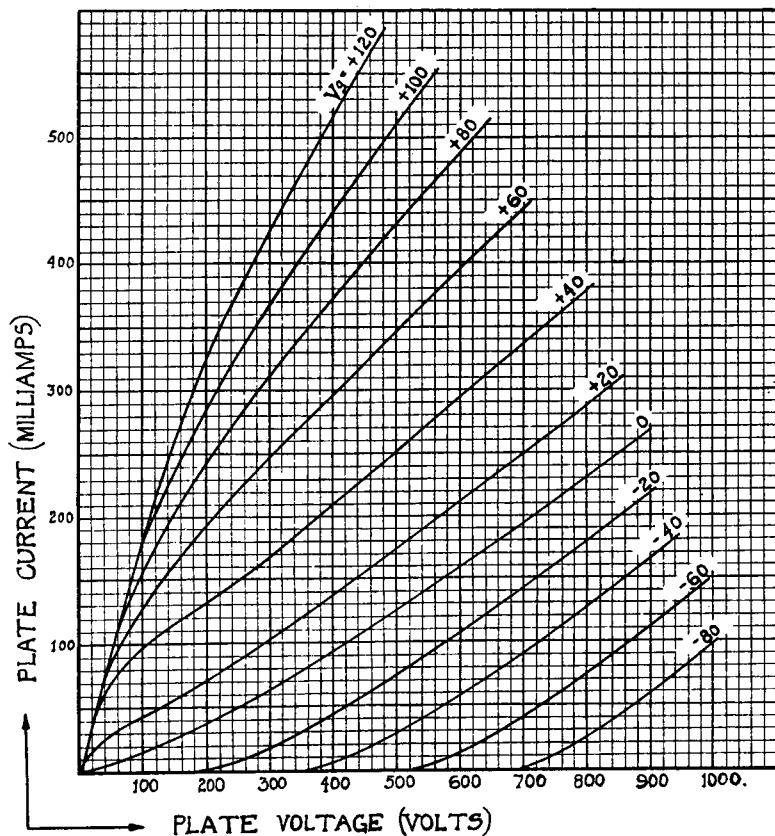
	Class B A.F. Amp. and Mod. For balanced 2 valve circuit
Direct anode voltage	600 volts
Grid bias	—55 to —65 volts
Anode current per valve—zero signal	0.012 amps.
Anode current per valve—maximum signal	0.11 amps.
Anode dissipation	30 watts
Load resistance—anode to anode	6,000 ohms
Maximum output—2 valves	73 watts

## RADIO FREQUENCY OPERATION.

	Class B Telephony	Class C Telephony	Class C Telegraphy
	Modulated carrier applied to grid	Subject to anode modulation	Unmodulated
Direct anode voltage	600	400	600 volts
Direct anode current	0.087	0.131	0.130 amps.
Grid bias	—65	—100	—150 to —200 volts
Anode dissipation	35	17.5	26 watts
Carrier output	17.5	35	52 watts

# —Standard Valves—

4043-C Valve  
-D Valve



V.4043-CD.2  
Nov. 1937

PRINTED IN  
ENGLAND