



RCA-71-A

POWER AMPLIFIER

71A

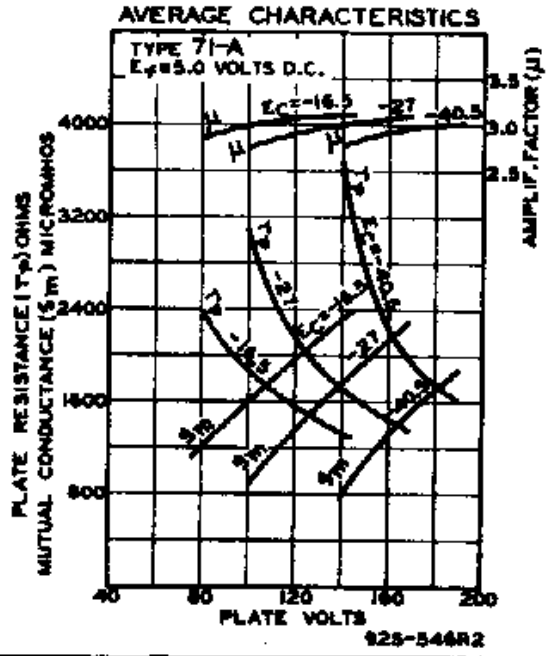
Filament	Coated	
Voltage	5.0	a-c or d-c volts
Current	0.25	amp.
Direct Interelectrode Capacitances:		
Grid to Plate	7.5	µf
Grid to Filament	3.2	µf
Plate to Filament	2.9	µf
Maximum Overall Length		4-11/16"
Maximum Diameter	(2) (3)	1-13/16"
Bulb		ST-14
Base		Medium 4-Pin Bay.
Pin 1-Filament	(1) (4)	Pin 5-Grid
Pin 2-Plate		Pin 4-Filament

AMPLIFIER (Class A)

Operating Conditions and Characteristics:

Filament	5.0	5.0	5.0	d-c volts
Plate	90	135	180 max.	volts
Grid	-16.5	-27	-40.5	volts
Amp. Fact.	3	3	3	
Plate Res.	2170	1820	1750	ohms
Mut. Cond.	1400	1650	1700	µmhos
Plate Cur.	10	17.5	20	ma.
Load Res.	3000	3000	4800	ohms
U.P.O.	125	400	790	mv.

A grid coupling resistor, if used, should not exceed 0.5 megohm.



JULY 1, 1935

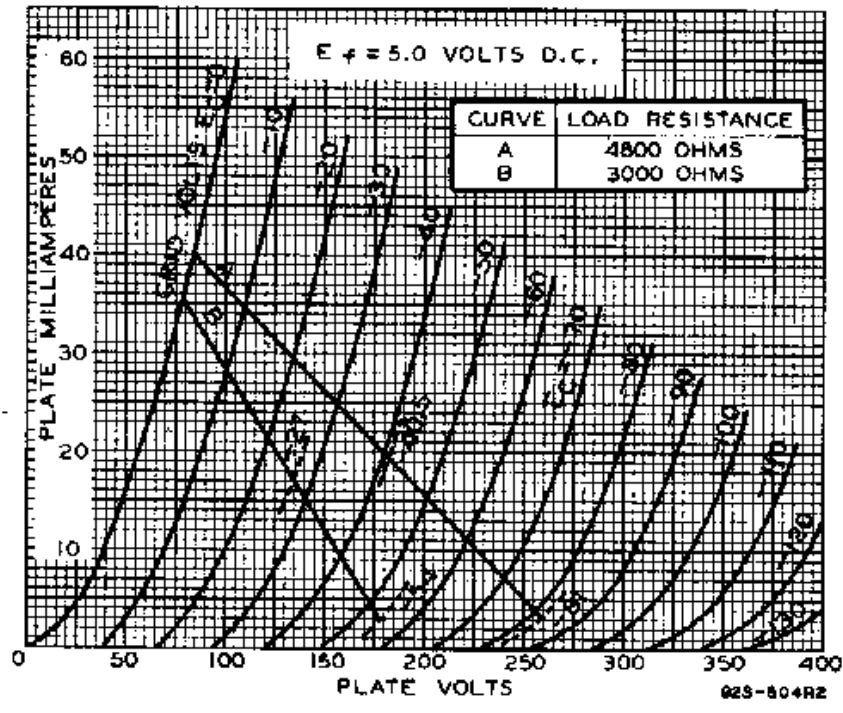
RCA RADIOTRON DIVISION  
RCA MANUFACTURING COMPANY, INC.

DATA

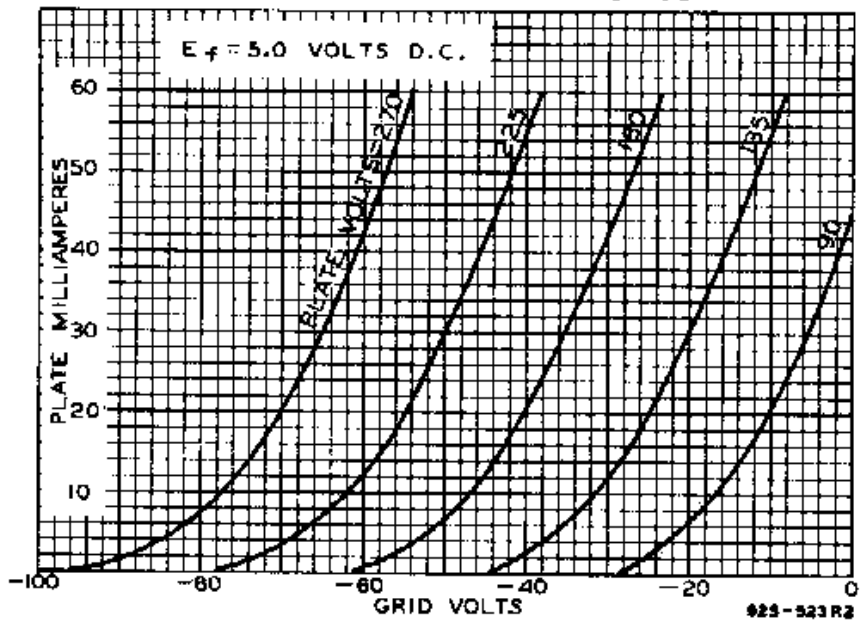
71-A

**Cunningham**  
**Radiotron**  
 RCA-71-A

**AVERAGE PLATE CHARACTERISTICS**



**AVERAGE CHARACTERISTICS**



SEPT. 13, 1935

RCA RADIODRON DIVISION  
 RCA MANUFACTURING COMPANY, INC.

92C-4477